

Supplementary Online Content

Sidney S, Quesenberry CP Jr, Jaffe MG, et al. Recent trends in cardiovascular mortality in the United States and public health goals. *JAMA Cardiol*. Published online June 29, 2016. doi:10.1001/jamacardio.2016.1326.

eTable 1. Trends in Mortality of Men in the United States From 2000 to 2014

eTable 2. Trends in Mortality of Women in the United States From 2000 to 2014

eTable 3. Trends in Mortality of Non-Hispanic Whites in the United States From 2000 to 2014

eTable 4. Trends in Mortality of Non-Hispanic Asians/Pacific Islanders in the United States From 2000 to 2014

eTable 5. Trends in Mortality of Hispanics in the United States From 2000 to 2014

eTable 6. Trends in Mortality of Non-Hispanic Blacks in the United States From 2000 to 2014

eTable 7. Trends in Mortality of Non-Hispanic American Indians/Alaskan Natives in the United States From 2000 to 2014

eFigure. Age-adjusted mortality rates in US, 2000-2014

This supplementary material has been provided by the authors to give readers additional information about their work.

eTable 1. Trends in Mortality of Men in the United States From 2000 to 2014										
Male										
		All CVD		Heart Disease		Stroke		Cancer		HD vs. Cancer
Year	(n=Population)	(n=Deaths)	AAMR	(n=Deaths)	AAMR	(n=Deaths)	AAMR	(n=Deaths)	AAMR	Gap (AAMR)
2000	138,053,563	437,893	409.0	344,807	320.0	64,769	62.4	286,082	248.9	71.1
2001	139,891,492	430,046	392.9	339,095	307.8	63,177	59.5	287,075	244.5	63.3
2002	141,230,559	431,626	386.7	340,933	303.4	62,622	57.9	288,768	240.9	62.5
2003	142,428,897	425,776	372.6	336,095	292.3	61,426	55.4	287,990	235.1	57.2
2004	143,828,012	408,541	349.8	321,973	274.1	58,800	51.7	286,830	229.5	44.6
2005	145,197,078	407,936	340.5	322,841	268.2	56,586	48.4	290,422	227.2	41.0
2006	146,647,265	396,612	321.6	315,706	254.9	54,524	45.2	290,069	221.7	33.2
2007	148,064,854	389,951	307.9	309,821	243.7	54,111	43.7	292,857	218.8	24.9
2008	149,489,951	390,371	300.5	311,201	238.5	53,525	42.2	295,259	214.9	23.6
2009	150,807,454	384,682	288.3	307,225	229.4	52,073	39.9	296,763	210.9	18.5
2010	151,781,326	385,600	283.4	307,384	225.1	52,367	39.3	301,037	209.9	15.2
2011	153,290,819	386,881	274.6	308,398	218.1	52,335	37.9	302,231	204.0	14.1
2012	154,492,067	391,662	270.1	312,491	214.7	52,638	37.1	305,670	200.3	14.4
2013	155,651,602	402,851	269.8	321,347	214.5	53,691	36.7	307,559	196.0	18.5
2014	156,936,487	408,747	266.1	325,077	210.9	55,471	36.9	311,296	192.9	18.0

Abbreviations: CVD = cardiovascular diseases
 HD = heart disease
 AAMR = age-adjusted mortality rates per 100,000 person-years, directly standardized to the year 2000 US Census population.

eTable 2. Trends in Mortality of Women in the United States From 2000 to 2014

Female

Year	(n=Population)	All CVD		HD		Stroke		Cancer		HD vs. Cancer
		(n=Deaths)	AAMR	(n=Deaths)	AAMR	(n=Deaths)	AAMR	(n=Deaths)	AAMR	Gap (AAMR)
2000	143,368,343	503,633	290.0	365,953	210.9	102,892	59.1	267,009	167.6	43.3
2001	145,077,463	496,953	282.4	361,047	205.4	100,361	56.8	266,693	165.1	40.3
2002	146,394,634	491,713	276.5	356,014	200.3	100,050	56.1	268,503	163.7	36.6
2003	147,679,036	481,404	267.0	348,994	193.7	96,263	53.2	268,912	161.5	32.2
2004	148,977,286	457,322	251.0	330,513	181.5	91,274	50.1	267,058	158.2	23.3
2005	150,319,521	452,907	244.2	329,250	177.5	86,993	47.0	268,890	156.7	20.8
2006	151,732,647	431,129	228.4	315,930	167.2	82,595	43.9	269,819	154.7	12.5
2007	153,166,353	420,306	218.5	306,246	159.0	81,841	42.7	270,018	152.3	6.7
2008	154,604,015	418,154	213.6	305,627	155.9	80,623	41.4	270,210	149.6	6.3
2009	155,964,075	400,060	201.0	292,188	146.6	76,769	38.8	270,865	147.4	-0.8
2010	156,964,212	398,854	197.3	290,305	143.3	77,109	38.3	273,706	146.7	-3.4
2011	158,301,098	396,594	191.4	288,179	138.7	76,597	37.2	274,460	144.0	-5.3
2012	159,421,973	395,769	187.1	287,220	135.5	75,908	36.1	276,953	142.1	-6.6
2013	160,477,237	398,086	184.8	289,758	134.3	75,287	35.2	277,322	139.5	-5.2
2014	161,920,569	399,028	182.1	289,271	131.8	77,632	35.6	280,403	138.1	-6.3

Abbreviations: CVD = cardiovascular diseases
 HD = heart disease
 AAMR = age-adjusted mortality rates per 100,000 person-years, directly standardized to the year 2000 US Census population.

eTable 3. Trends in Mortality of Non-Hispanic Whites in the United States From 2000 to 2014										
Non-Hispanic White										
		All CVD		HD		Stroke		Cancer		HD vs. Cancer
Year	(n=Population)	(n=Deaths)	AAMR	(n=Deaths)	AAMR	(n=Deaths)	AAMR	(n=Deaths)	AAMR	Gap (AAMR)
2000	197,324,684	783,999	336.5	594,465	255.5	138,210	59.0	458,200	200.6	54.9
2001	197,842,671	767,638	325.3	582,349	247.2	133,879	56.4	456,709	197.8	49.4
2002	198,101,982	762,368	319.5	577,761	242.5	133,118	55.5	458,754	196.1	46.4
2003	198,289,486	745,493	308.1	565,808	234.2	127,969	52.6	457,127	192.9	41.3
2004	198,619,903	709,006	290.0	537,512	220.1	121,065	49.3	453,534	189.2	30.9
2005	198,880,984	701,798	282.4	535,101	215.5	115,074	46.2	456,133	187.8	27.7
2006	199,200,396	671,944	265.8	516,883	204.5	108,886	42.9	455,978	185.1	19.4
2007	199,492,421	655,855	254.9	502,683	195.5	107,678	41.7	456,576	182.6	12.9
2008	199,783,797	653,850	249.9	503,096	192.4	106,134	40.5	457,084	179.9	12.5
2009	199,993,079	631,273	237.7	485,779	182.9	101,703	38.3	457,189	177.4	5.5
2010	200,127,372	629,728	234.0	483,973	179.9	101,849	37.8	460,567	176.5	3.4
2011	200,423,243	628,744	228.6	482,979	175.6	101,043	36.7	460,026	173.0	2.6
2012	200,698,847	627,614	224.3	481,991	172.3	100,154	35.8	462,499	170.6	1.7
2013	200,918,513	634,820	223.1	488,817	171.8	99,759	35.0	462,850	167.7	4.1
2014	201,048,793	637,702	221.0	489,926	169.9	102,326	35.4	466,270	166.2	3.7

Abbreviations: CVD = cardiovascular diseases
 HD = heart disease
 AAMR = age-adjusted mortality rates per 100,000 person-years, directly standardized to the year 2000 US Census population.

eTable 4. Trends in Mortality of Non-Hispanic Asians/Pacific Islanders in the United States From 2000 to 2014										
Non-Hispanic Asians/Pacific Islanders										
	All CVD			HD		Stroke		Cancer		HD vs. Cancer
Year	(n=Population)	(n=Deaths)	AAMR	(n=Deaths)	AAMR	(n=Deaths)	AAMR	(n=Deaths)	AAMR	Gap (AAMR)
2000	11,355,553	13,044	213.1	8,949	146.1	3,240	28.5	9,069	122.0	24.1
2001	11,983,178	13,676	205.5	9,291	139.5	3,459	28.9	9,663	120.5	19.0
2002	12,472,384	14,212	202.0	9,814	139.2	3,485	27.9	9,836	115.6	23.6
2003	12,942,337	14,500	193.1	9,934	132.5	3,570	27.6	10,360	116.1	16.4
2004	13,406,530	14,298	180.7	9,756	123.4	3,437	25.6	10,691	113.2	10.2
2005	13,888,295	14,933	174.7	10,281	119.8	3,493	25.2	11,357	113.7	6.1
2006	14,375,996	15,212	168.1	10,457	115.7	3,615	25.1	11,592	110.1	5.6
2007	14,854,701	15,139	158.4	10,394	108.6	3,536	23.8	12,138	110.2	-1.6
2008	15,336,181	15,793	155.9	10,951	108.1	3,621	23.6	12,682	109.5	-1.4
2009	15,793,995	15,972	149.0	11,134	103.8	3,586	22.7	13,062	107.5	-3.7
2010	16,133,872	16,387	147.0	11,254	101.1	3,778	23.4	13,906	109.6	-8.5
2011	16,579,709	16,677	137.4	11,406	93.8	3,884	23.4	14,500	106.7	-12.9
2012	17,175,596	17,542	134.9	12,068	92.7	4,055	23.6	15,099	105.1	-12.4
2013	17,693,870	18,819	134.5	13,064	93.2	4,147	23.4	15,451	101.3	-8.1
2014	18,436,908	18,931	125.9	13,021	86.4	4,272	23.2	16,292	99.8	-13.4

Abbreviations: CVD = cardiovascular diseases
 HD = heart disease
 AAMR = age-adjusted mortality rates per 100,000 person-years, directly standardized to the year 2000 US Census population.

eTable 5. Trends in Mortality of Hispanics in the United States From 2000 to 2014

Hispanic

		All CVD		HD		Stroke		Cancer		HD vs. Cancer
Year	(n= Population)	(n=Deaths)	AAMR	(n=Deaths)	AAMR	(n=Deaths)	AAMR	(n=Deaths)	AAMR	Gap (AAMR)
2000	35,305,818	34,288	259.6	25,819	196.0	6,187	46.4	21,160	134.9	61.1
2001	37,144,096	35,784	255.4	27,090	193.7	6,416	45.3	22,371	133.1	60.6
2002	38,617,620	36,762	248.4	27,887	188.8	6,451	43.2	23,141	131.9	56.9
2003	40,049,429	37,505	241.1	28,298	182.1	6,658	42.5	24,070	130.0	52.1
2004	41,501,375	37,124	225.6	27,788	169.1	6,781	40.8	24,522	126.1	43.0
2005	43,023,614	39,291	225.8	29,555	170.4	6,830	38.6	26,156	127.9	42.5
2006	44,606,305	38,562	209.1	28,921	157.8	7,005	37.2	26,633	123.7	34.1
2007	46,196,853	38,935	199.9	29,021	149.5	7,078	35.8	27,660	121.8	27.7
2008	47,793,785	38,934	189.8	28,951	141.4	7,121	34.4	28,851	121.0	20.4
2009	49,327,489	39,628	181.5	29,611	135.8	7,065	32.2	29,935	119.7	16.1
2010	50,477,594	40,413	178.8	30,006	132.8	7,274	32.1	31,119	119.7	13.1
2011	52,045,277	41,072	167.4	30,385	123.9	7,552	30.7	32,381	117.0	6.9
2012	53,027,708	42,709	165.1	31,595	122.0	7,767	30.0	34,147	116.9	5.1
2013	54,071,370	44,868	163.7	33,243	121.2	8,127	29.6	35,147	114.5	6.7
2014	55,387,539	46,446	158.9	34,021	116.0	8,713	30.2	36,447	112.4	3.6

Abbreviations: CVD = cardiovascular diseases
 HD = heart disease
 AAMR = age-adjusted mortality rates per 100,000 person-years, directly standardized to the year 2000 US Census population.

eTable 6. Trends in Mortality of Non-Hispanic Blacks in the United States From 2000 to 2014**Non-Hispanic Black**

Year	(n=Population)	All CVD		HD		Stroke		Cancer		HD vs. Cancer
		(n=Deaths)	AAMR	(n=Deaths)	AAMR	(n=Deaths)	AAMR	(n=Deaths)	AAMR	Gap (AAMR)
2000	35,091,809	103,990	446.8	76,706	328.4	19,053	82.9	61,390	252.0	76.4
2001	35,638,389	103,942	438.4	76,794	322.6	18,844	80.6	61,580	247.0	75.6
2002	36,049,904	103,843	431.3	76,694	317.1	18,691	78.9	61,996	243.4	73.7
2003	36,422,205	103,839	422.5	76,452	309.6	18,649	77.1	62,054	238.0	71.6
2004	36,848,991	100,198	399.4	73,373	290.9	17,980	72.9	61,842	231.8	59.1
2005	37,270,736	99,785	386.3	73,302	282.4	17,378	68.2	62,510	227.7	54.7
2006	37,719,495	97,055	365.7	71,461	268.2	16,882	64.3	62,475	222.0	46.2
2007	38,184,699	95,751	351.3	70,443	257.4	16,934	63.0	63,441	219.8	37.6
2008	38,651,733	94,970	338.7	69,918	248.1	16,527	59.9	63,279	213.0	35.1
2009	39,104,815	92,705	320.1	68,811	236.4	15,718	55.2	63,967	209.2	27.2
2010	39,437,133	92,556	312.8	68,215	229.5	15,833	54.3	65,276	208.8	20.7
2011	39,944,896	91,679	299.1	67,595	219.3	15,722	52.3	66,158	204.0	15.3
2012	40,391,388	93,361	293.8	69,147	216.3	15,714	50.4	66,565	198.6	17.7
2013	40,802,086	96,236	293.6	71,102	215.5	16,111	50.3	67,272	194.4	21.1
2014	41,316,519	97,783	288.4	71,894	210.8	16,883	50.9	68,104	190.2	20.6

Abbreviations: CVD = cardiovascular diseases
 HD = heart disease
 AAMR = age-adjusted mortality rates per 100,000 person-years, directly standardized to the year 2000 US Census population.

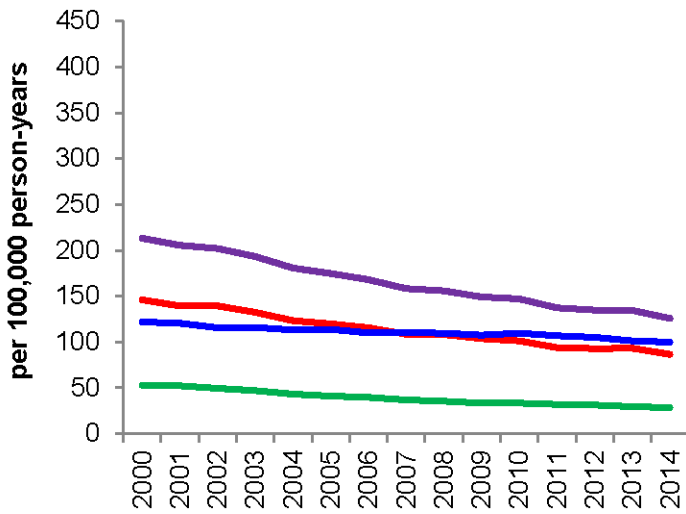
eTable 7. Trends in Mortality of Non-Hispanic American Indians/Alaskan Natives in the United States From 2000 to 2014

Non-Hispanic American Indian / Alaskan Native										
		All CVD		HD		Stroke		Cancer		HD vs. Cancer
Year	(n=Population)	(n=Deaths)	AAMR	(n=Deaths)	AAMR	(n=Deaths)	AAMR	(n=Deaths)	AAMR	Gap (AAMR)
2000	2,344,042	3,127	267.4	2,350	197.8	554	49.6	1,872	143.8	54.0
2001	2,360,621	3,118	257.6	2,353	190.6	559	49.1	2,106	155.2	35.4
2002	2,383,303	3,226	262.9	2,421	195.7	558	47.2	2,126	152.0	43.7
2003	2,404,476	3,397	263.8	2,634	201.6	531	43.5	2,097	147.2	54.4
2004	2,428,499	3,329	257.5	2,524	192.8	562	45.9	2,328	155.9	36.9
2005	2,452,970	3,447	251.7	2,576	185.7	603	45.6	2,383	153.2	32.5
2006	2,477,720	3,360	238.1	2,630	182.7	509	38.7	2,359	150.9	31.8
2007	2,502,533	3,367	230.3	2,557	171.6	557	40.8	2,459	150.6	21.0
2008	2,528,470	3,273	213.0	2,549	163.6	495	33.7	2,630	155.0	8.6
2009	2,552,151	3,402	214.1	2,654	164.2	533	36.0	2,596	144.2	20.0
2010	2,569,567	3,457	214.2	2,656	161.6	540	35.9	2,832	155.0	6.6
2011	2,598,792	3,630	211.2	2,805	161.0	573	34.7	2,692	141.2	19.8
2012	2,620,501	3,633	199.6	2,823	153.7	548	31.6	2,876	142.7	11.0
2013	2,643,000	3,895	204.2	3,002	155.5	569	31.6	2,951	141.7	13.8
2014	2,667,297	4,054	202.0	3,118	153.3	616	32.0	3,010	138.5	14.8

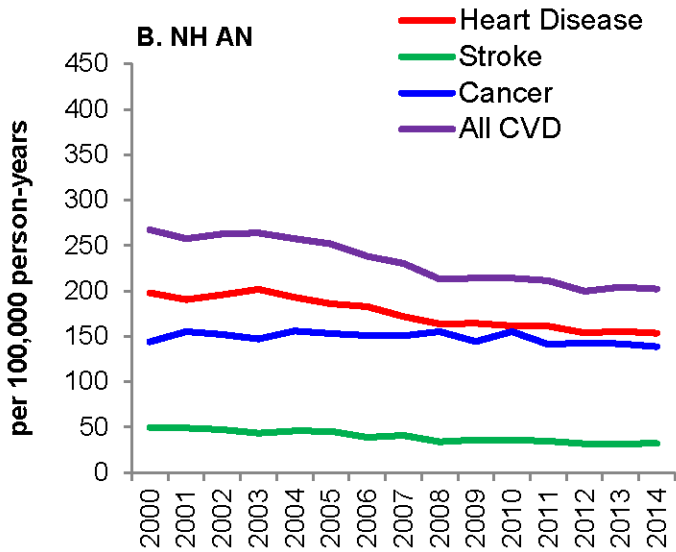
Abbreviations: CVD = cardiovascular diseases
 HD = heart disease
 AAMR = age-adjusted mortality rates per 100,000 person-years, directly standardized to the year 2000 US Census population.

eFigure. Age-adjusted mortality rates in U.S. 2000-2014.

A. NH Asian – Pacific Islander



B. NH American Indian/ Alaskan-Native



Abbreviations: CVD = Cardiovascular Disease
NH = Non-Hispanic