

## Supplemental Online Content

Chow CK, Redfern J, Hillis GS, et al. Effect of lifestyle-focused text messaging on risk factor modification in patients with coronary heart disease: a randomized clinical trial. *JAMA*. doi:10.1001/jama.2015.10945.

**eTable.** Cardioprotective Medications at 6 Month Follow-up

**eFigure 1.** Subgroup Analyses for LDL-Cholesterol at 6 Months

**eFigure 2.** Stratified Analyses for SBP at 6 Months

**eFigure 3.** Stratified Analyses for BMI at 6 Months

This supplemental content was provided by the authors to give readers additional information about their work.

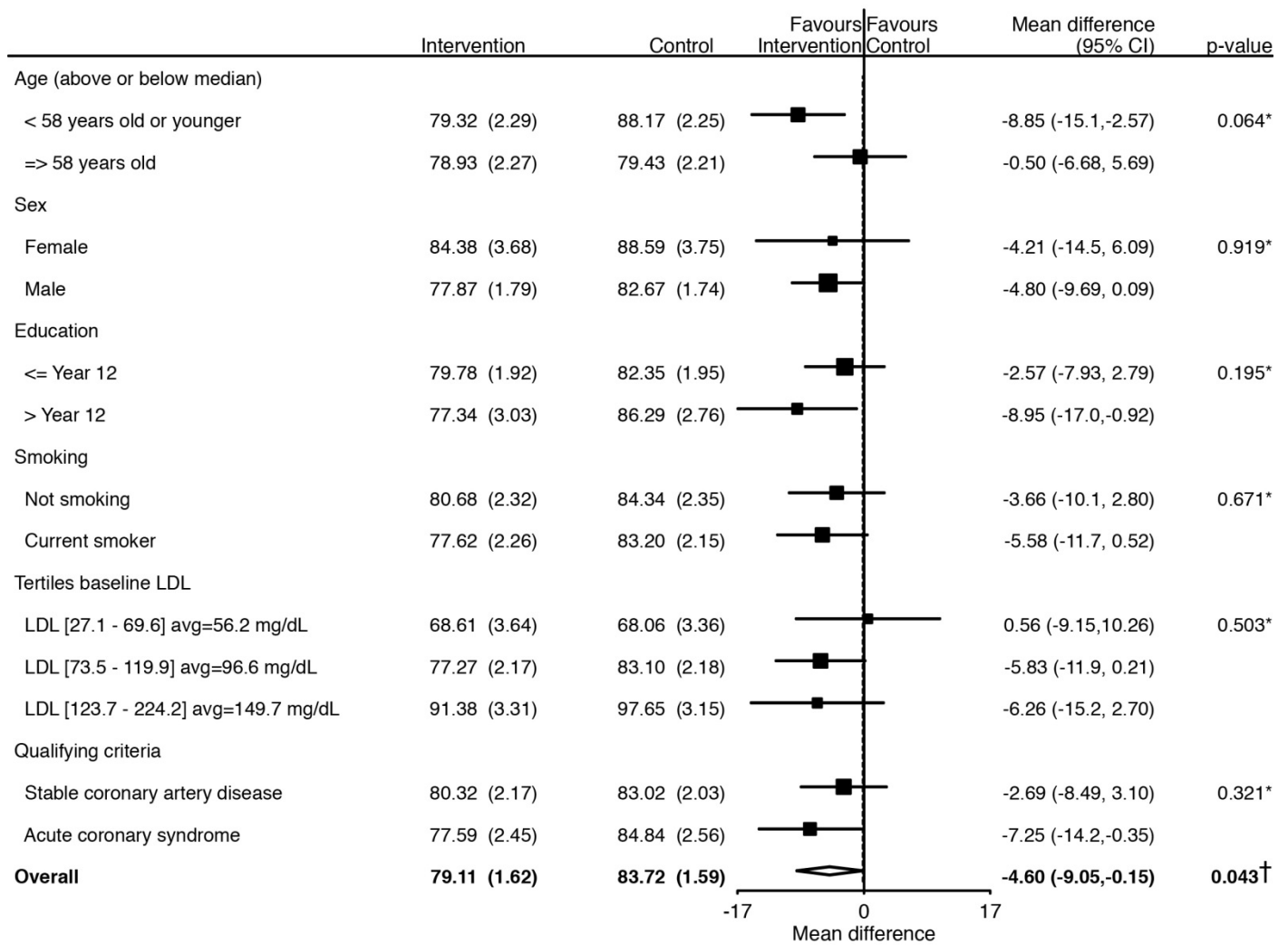
**eTable.** Cardioprotective Medications at 6 Month Follow-up

<b>Variable</b>	<b>Intervention (N = 352)</b>	<b>Control (N = 358)</b>	<b>Relative risk (95% CI)</b>	<b>P for the difference</b>
ACE/ARB	224/ 339 (66.1%)	254/ 354 (71.8%)		
Aspirin	307/ 339 (90.6%)	332/ 354 (93.8%)		
Beta-blocker	218/ 338 (64.5%)	223/ 354 (63.0%)		
Statin	311/ 339 (91.7%)	329/ 354 (92.9%)		
At least 3 of the 4*	264/ 338 (78.1%)	294/ 354 (83.1%)	0.94 (0.87 -1.01)	0.1016
All of the 4*	133/ 338 (39.3%)	149/ 354 (42.1%)	0.93 (0.78 -1.12)	0.4637

Note: \* the 4 main medications are ACE/ARB, aspirin, beta-blocker and statin.

Note: Log-binomial regression including randomised groups (intervention/control) as fixed effect

**eFigure 1. Subgroup Analyses for LDL-Cholesterol at 6 Months**

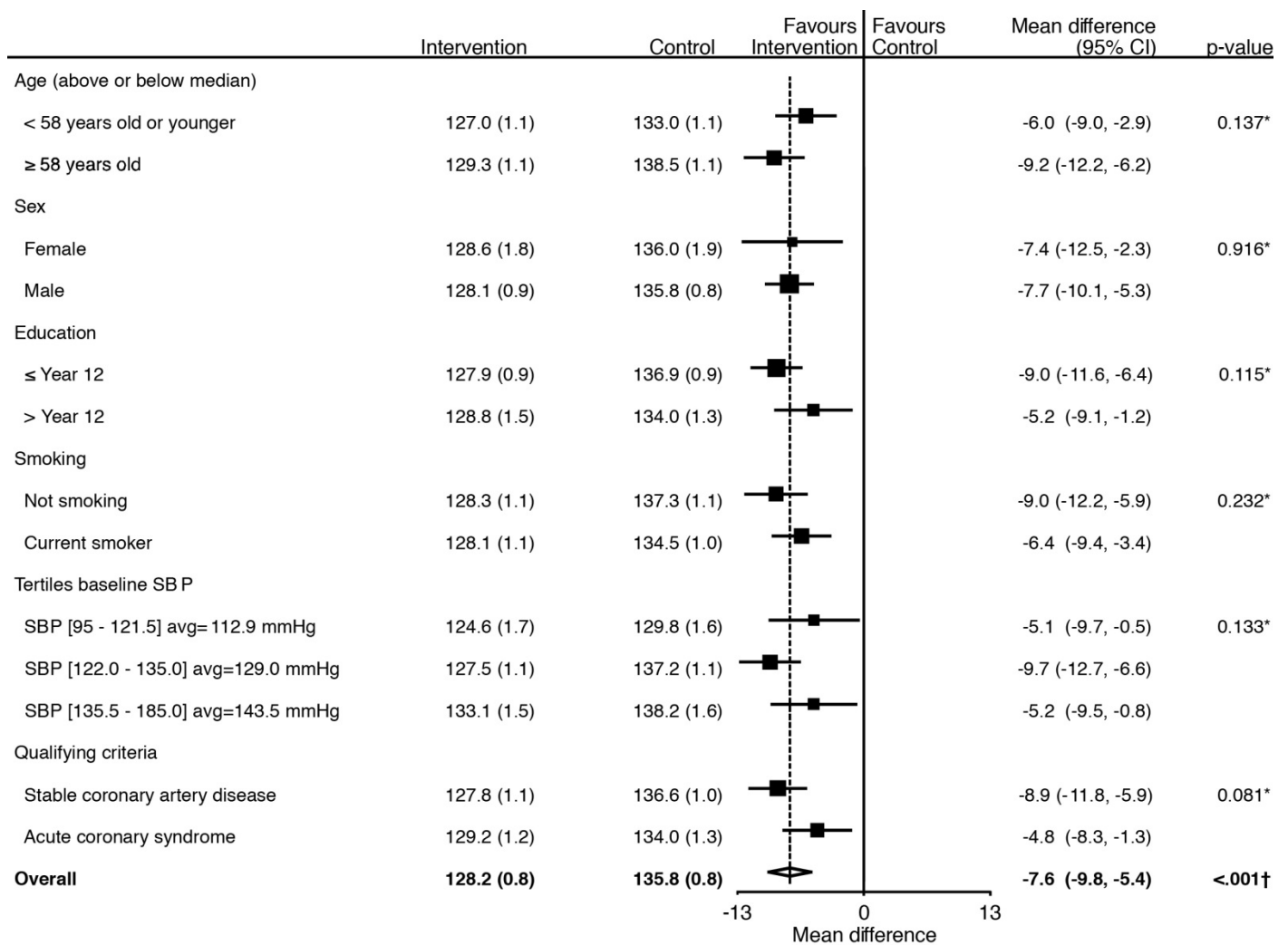


\*p-value for homogeneity †p-value for overall effect

LDL cholesterol in md/dL. Mean (standard error) for intervention and control.

LDL cholesterol in mg/dL. Mean (standard error) for intervention and control

**eFigure 2. Stratified Analyses for SBP at 6 Months**

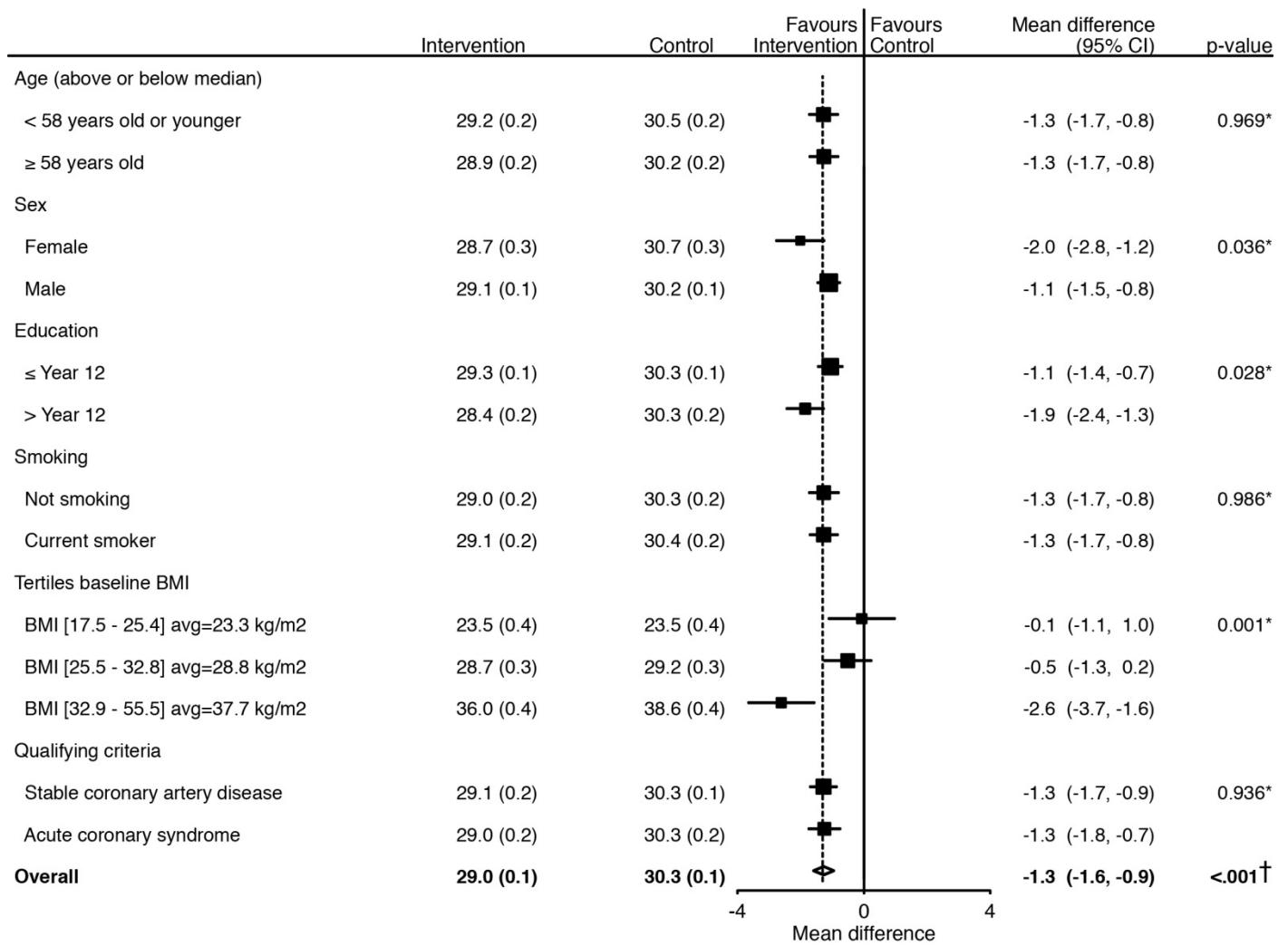


\*p-value for homogeneity †p-value for overall effect

Systolic blood pressure in mmHg. Mean (standard error) for intervention and control.

Systolic blood pressure in mmHg. Mean (standard error) for intervention and control

**eFigure 3. Stratified Analyses for BMI at 6 Months**



\*p-value for homogeneity †p-value for overall treatment effect

Body Mass Index (BMI) = weight (kg) / height<sup>2</sup>. Mean (standard error) for intervention and control"

Body Mass Index (BMI) = weight (kg) / height (m<sup>2</sup>). Mean (standard error) for intervention and control